

U.S. Army Public Health Center

# Army Influenza Activity Report

Week ending 30 January 2021 (Week 4)

## Influenza Vaccination Coverage\*

As of 3 February 2021

|     |                  |
|-----|------------------|
| 90% | Army Active Duty |
| 79% | Army Guard       |
| 86% | Army Reserve     |

\*Data Source: MEDPROS

Click to enlarge images.

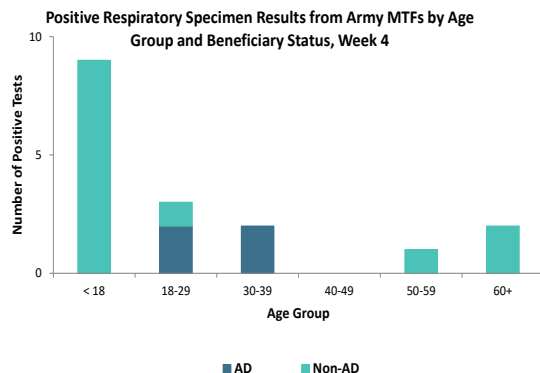
## SUMMARY

Influenza activity remains low in the Army population. The proportion of positive influenza A specimens for the Army in week 4 is 0.6%, which is significantly lower than that of the 2019-2020 season (25%) for the same time period. No hospitalizations were reported in week 4; the season total thus far is four compared to 141 influenza-associated hospitalizations reported as of this time last season. Individuals younger than 18 were most affected by select respiratory illnesses in the Army population; 69% (n=9) of positive specimens were collected from this age group. Nationwide, influenza activity is low with 0.1% of specimens tested by clinical laboratories being positive for influenza. Although flu activity is lower than usual, flu vaccines are still recommended.

## GEOGRAPHIC SPREAD

Data on the geographical spread of influenza is unavailable this season due to the COVID-19 pandemic. For information from previous seasons and additional information about nationwide influenza surveillance, please visit the Centers for Disease Control and Prevention's website by clicking [here](#).

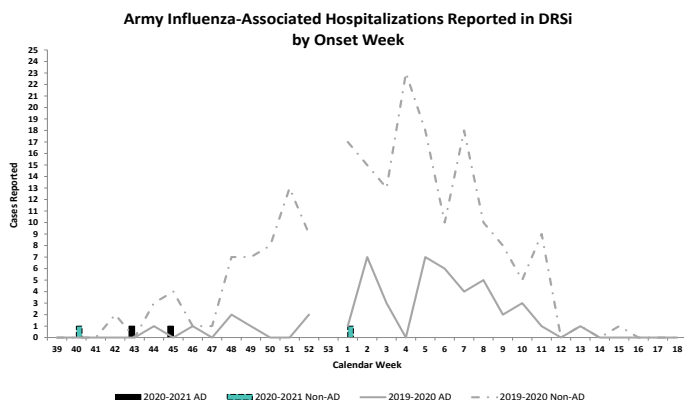
## DEMOGRAPHICS



**AD:** Four positive respiratory specimens were collected from active duty (AD) Service members during week 4; they were collected from individuals in the 18-29 (n=2) and 30-39 (n=2) age groups.

**Non-AD:** Thirteen positive respiratory specimens were collected from non-AD individuals during week 4; 69% (n=9) were from those under 18 years of age and 15% (n=2) were collected from individuals 60 or older.

## INFLUENZA-ASSOCIATED HOSPITALIZATIONS

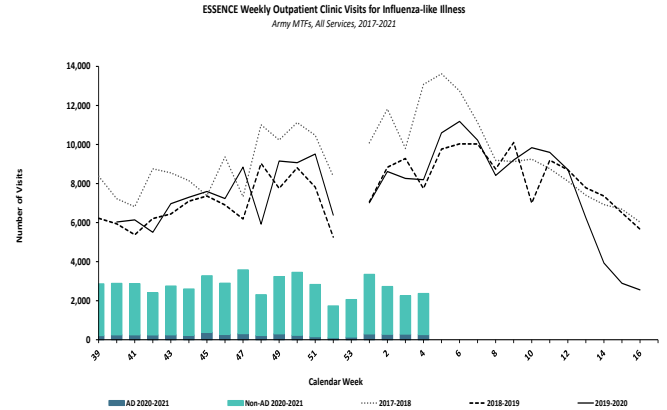
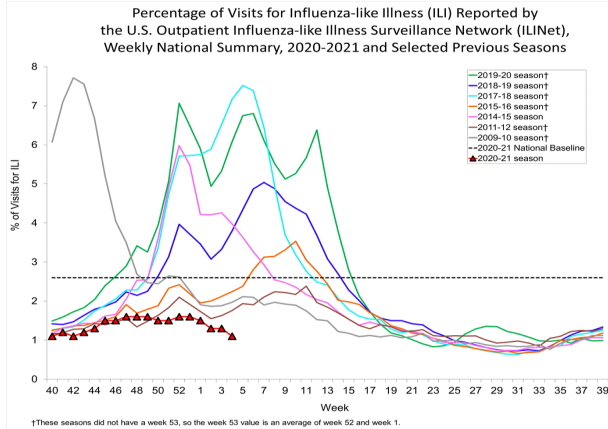


No influenza-associated hospitalizations with onset dates in week 4 were reported to the Disease Reporting System internet (DRSi); four hospitalizations have been reported for the entire season thus far. During the 2019-2020 season, 23 hospitalizations were reported in week 4 (with 141 hospitalizations reported from start of the season through week 4).

\*DRSi does not capture cases older than 65 years old for influenza-associated hospitalizations.

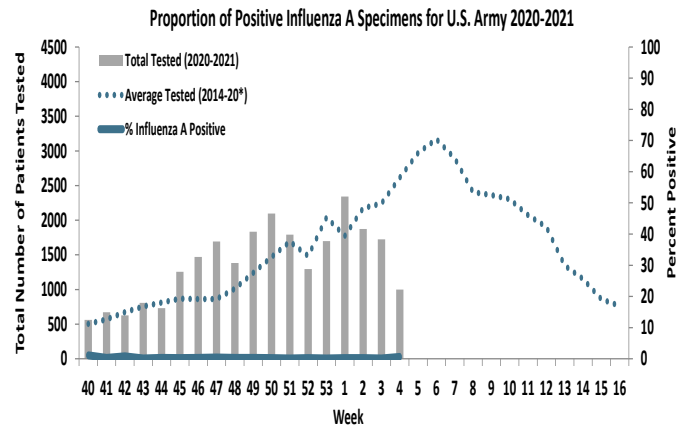
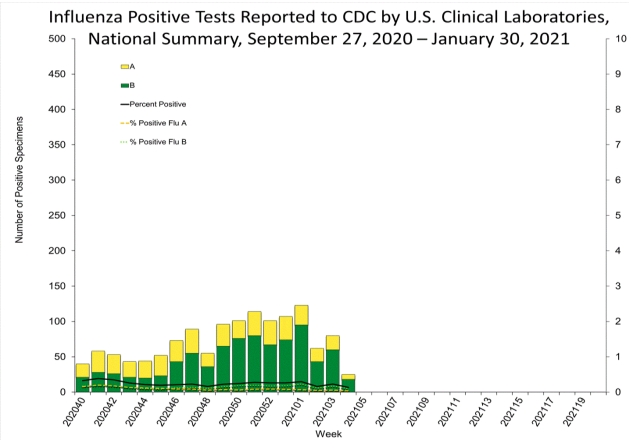
**ILI ACTIVITY - UNITED STATES**

**ILI ACTIVITY - ARMY**



Nationwide in week 4, incident ILI activity was 1.1%; this is below the national baseline of 2.6%. At Army medical treatment facilities, incident ILI activity increased by 5% from week 3 to week 4. The majority of ILI encounters (89%) occurred among non-AD patients in week 4.

**LABORATORY RESPIRATORY SPECIMEN TESTING**



Nationwide during week 4, a total of 18, 531 specimens were tested for influenza by select clinical laboratories and submitted to CDC; 25 (0.1%) were positive. Influenza B accounted for 72% (n=18) of the total positive specimens. In the Army population, 0.6% of 1,000 specimens tested for influenza A were positive in week 4.

|  |               | Week 1       | Week 2       | Week 3       | Week 4       | Season Total  |
|--|---------------|--------------|--------------|--------------|--------------|---------------|
| Army MTF<br>Laboratory Results,<br>2020-21 | Influenza A   | 4            | 4            | 1            | 6            | 70            |
|  | Influenza B   | 4            | 3            | 1            | 2            | 66            |
|  | Adenovirus    | 1            | 3            | 2            | 0            | 56            |
|  | Enterovirus   | 17           | 14           | 14           | 9            | 234           |
|  | Parainfluenza | 0            | 1            | 0            | 0            | 8             |
|  | RSV           | 1            | 2            | 0            | 0            | 32            |
|  | Negative      | 4,912        | 4,149        | 3,878        | 2,148        | 58,652        |
|  | <b>Total</b>  | <b>4,939</b> | <b>4,176</b> | <b>3,896</b> | <b>2,165</b> | <b>59,118</b> |

Of the 2,165 specimens tested in week 4, 1% (n=17) were positive for any type of respiratory illness. Rhinovirus/enterovirus accounted for 52% (n=9) of positive specimens, influenza A for 35% (n=6), and influenza B for 12% (n=2).

Additionally, the reported number of specimens tested decreased by 44% since week 3 (n=3,896).

**Locations providing week 4 laboratory data as of 3 January 2021:** Ft Belvoir, Ft Benning, Ft Bliss, Ft Bragg, Ft Campbell, Ft Carson, Ft Drum, Ft Eustis, Ft Gordon, Ft Huachuca, Ft Jackson, Ft Knox, Ft Leavenworth, Ft Lee, Ft Leonard Wood, Ft Lewis, Ft Meade, Ft Polk, Ft Riley, Ft Rucker, Ft Stewart, Ft Wainwright, Korea, Redstone Arsenal, Tripler Army Medical Center, and Walter Reed National Military Medical Center.

## LABORATORY RESPIRATORY SPECIMEN TESTING DURING WEEK 4

| Region | Installation                | Influenza A |                     | Influenza B |                     | Adenovirus |                     |
|--------|-----------------------------|-------------|---------------------|-------------|---------------------|------------|---------------------|
|        |                             | % Positive  | Baseline % Positive | % Positive  | Baseline % Positive | % Positive | Baseline % Positive |
| RHCA   | Ft. Belvoir                 | 0           | 19.6                | 0           | 25.9                | 0          | 7.2                 |
|        | Ft. Benning                 | 0           | 13.4                | 0           | 8.5                 |            |                     |
|        | Ft. Bragg                   | 0           | 20.3                | 0           | 100                 | 0          |                     |
|        | Ft. Campbell                | 0           | 13.7                | 0           | 12.7                |            | 100                 |
|        | Ft. Drum                    | 0           | 14.3                | 0           | 100                 |            |                     |
|        | Ft. Eustis                  | 0           | 37.5                | 0           | 100                 |            |                     |
|        | Ft. Gordon                  | 0           | 23.2                | 0           | 12                  |            | 100                 |
|        | Ft. Jackson                 | 0           | 28.9                | 0           | 5.6                 |            |                     |
|        | Ft. Knox                    | 0           | 0                   | 0           | 0                   |            |                     |
|        | Ft. Lee                     | 0           | 14.6                | 0           | 100                 |            |                     |
|        | Ft. Meade                   | 0           | 39.1                | 0           |                     |            |                     |
|        | Ft. Rucker                  | 0           | 27.3                | 1.7         | 3.4                 |            |                     |
|        | Ft. Stewart                 | 0           | 28.4                | 0           | 6.9                 |            | 100                 |
|        | Redstone Arsenal            | 0           | 12.5                | 0           | 0                   |            |                     |
| RHCC   | Ft. Bliss                   | 0           | 21.7                | 0           | 33.9                |            | 10.6                |
|        | Ft. Carson                  | 1.8         | 13.4                | 0           | 100                 |            |                     |
|        | Ft. Leavenworth             | 0           | 0                   | 25          | 30                  |            |                     |
|        | Ft. Leonard Wood            |             | 3                   | 0           | 31.7                |            | 100                 |
|        | Ft. Polk                    | 17.9        | 2                   | 0           | 100                 |            |                     |
|        | Ft. Riley                   | 0           | 5.5                 | 0           | 13.3                |            |                     |
|        | Korea                       | 0           | 37.1                | 0           | 0                   | 0          | 5                   |
|        | Tripler Army Medical Center | 0           | 41.6                | 0           | 8.1                 | 0          | 0                   |

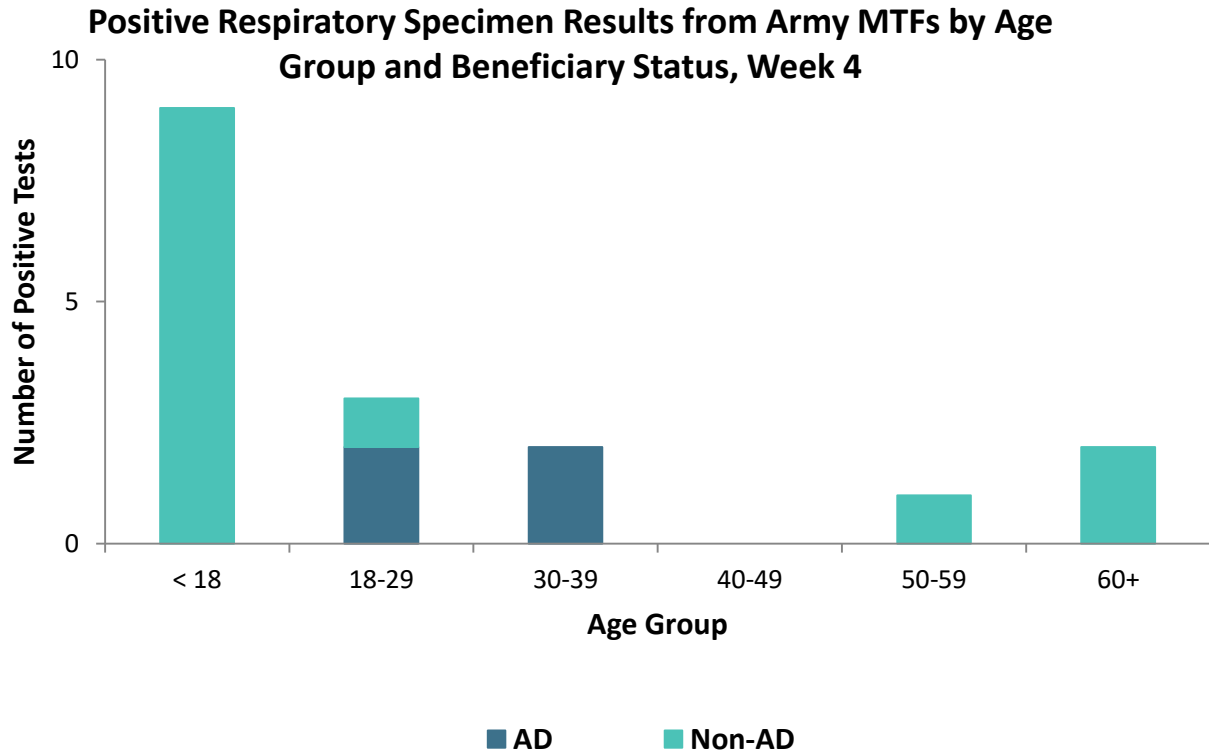
| Region | Installation                | Enterovirus |                     | Parainfluenza |                     | Respiratory Syncytial Virus |                     |
|--------|-----------------------------|-------------|---------------------|---------------|---------------------|-----------------------------|---------------------|
|        |                             | % Positive  | Baseline % Positive | % Positive    | Baseline % Positive | % Positive                  | Baseline % Positive |
| RHCA   | Ft. Belvoir                 |             |                     | 0             | 4.7                 | 0                           | 12                  |
|        | Ft. Bragg                   | 28.6        |                     | 0             |                     | 0                           |                     |
|        | Ft. Stewart                 |             |                     |               |                     | 0                           | 12.5                |
| RHCC   | Ft. Bliss                   |             |                     |               |                     | 0                           | 6.6                 |
|        | Ft. Carson                  |             |                     |               |                     | 0                           | 44.8                |
|        | Ft. Polk                    |             |                     |               |                     | 0                           | 25                  |
|        | Ft. Riley                   |             |                     |               |                     | 0                           | 6.5                 |
|        | Korea                       |             | 0                   | 0             | 1.7                 | 0                           | 6.7                 |
|        | Tripler Army Medical Center | 42.9        | 0                   | 0             | 0                   |                             | 100                 |

% Positive: Percentage of positive specimens reported during MMWR week 4, 2020/2021 season.

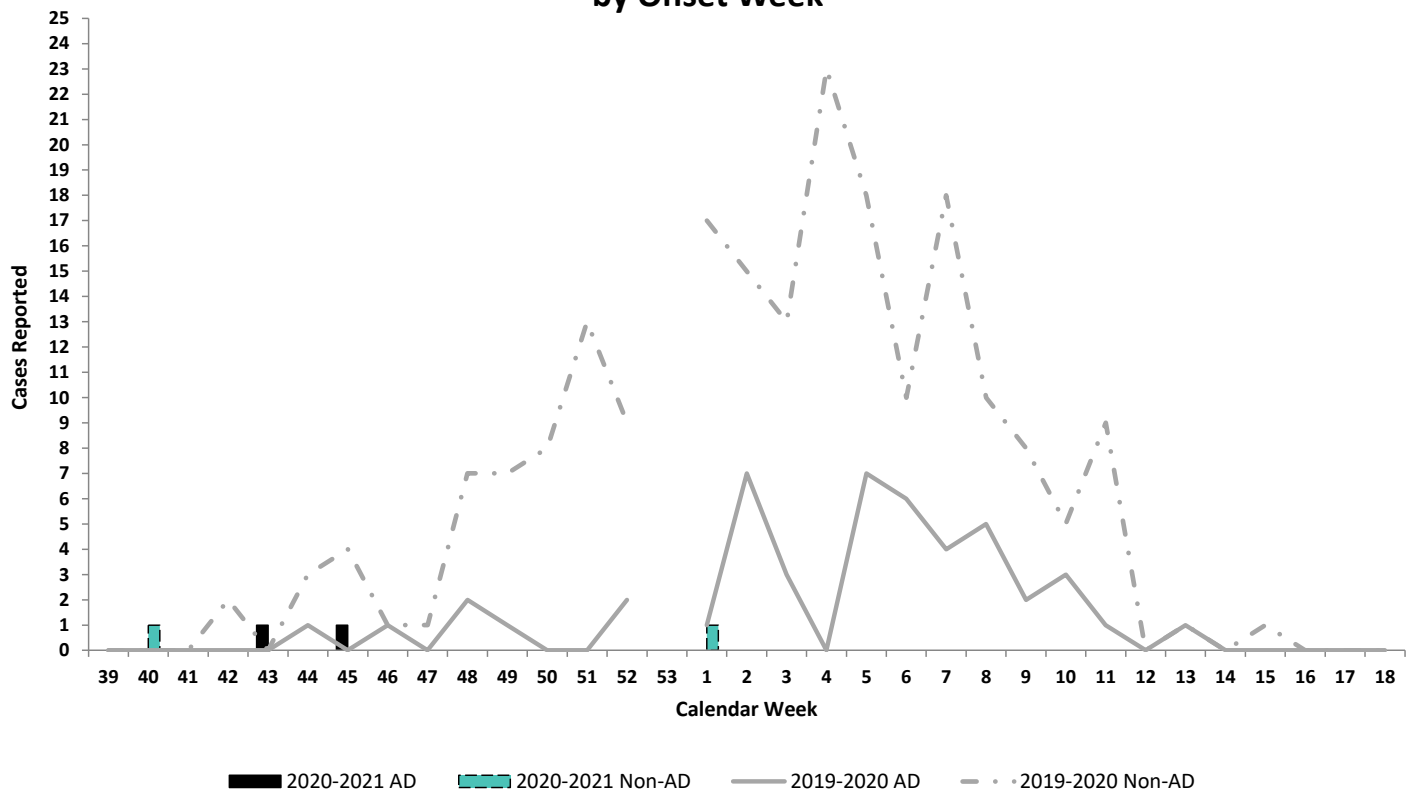
Baseline % Pos.: Percentage of positive specimens reported in MMWR week 4 during influenza seasons from September 2012 - May 2020.

Missing values indicate that specimens were not tested for the disease during the week of interest.





**Army Influenza-Associated Hospitalizations Reported in DRSi by Onset Week**



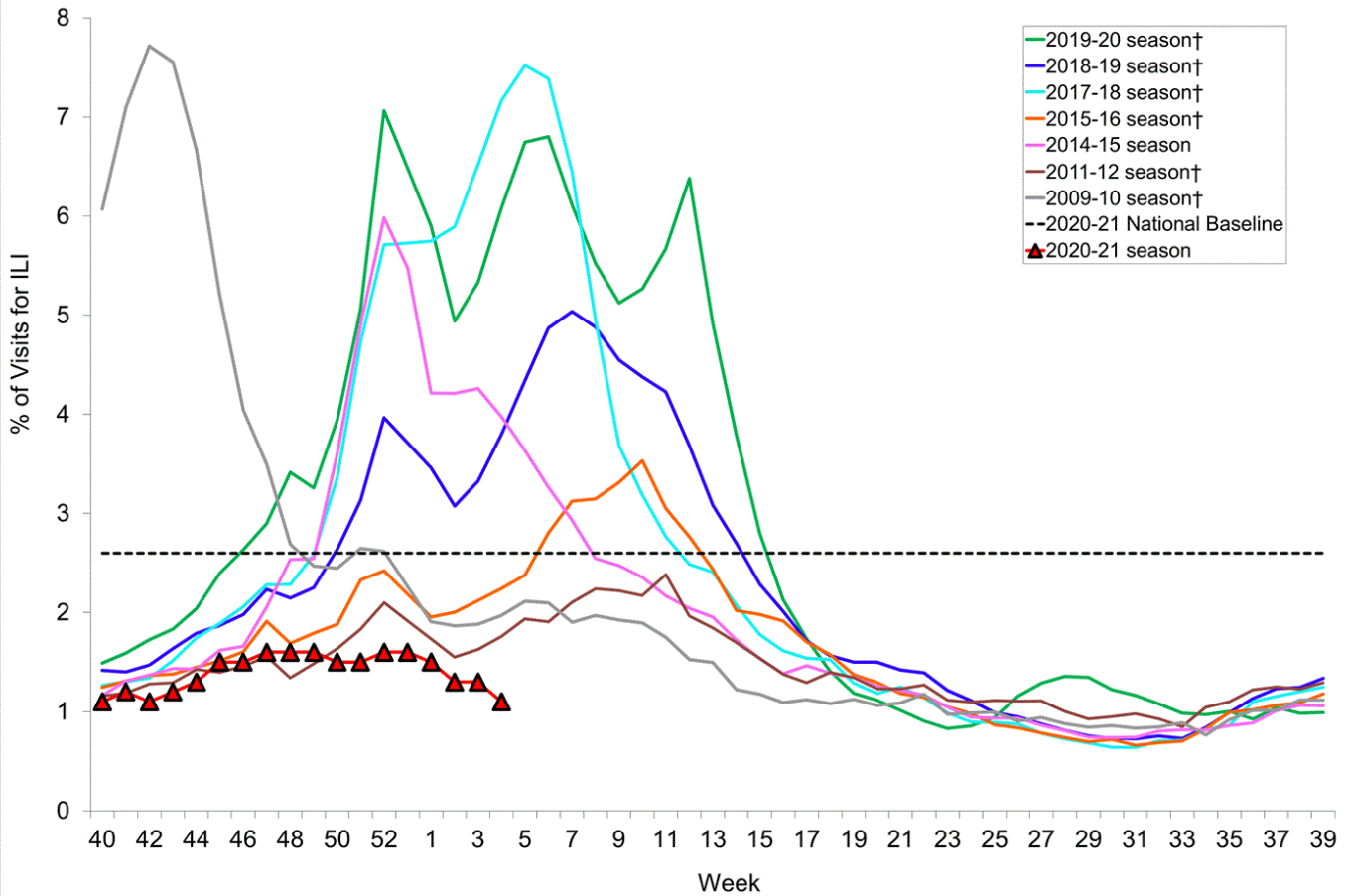


U.S. Army Public Health Center

# Army Influenza Activity Report

Week ending 30 January 2021 (Week 4)

Percentage of Visits for Influenza-like Illness (ILI) Reported by the U.S. Outpatient Influenza-like Illness Surveillance Network (ILINet), Weekly National Summary, 2020-2021 and Selected Previous Seasons



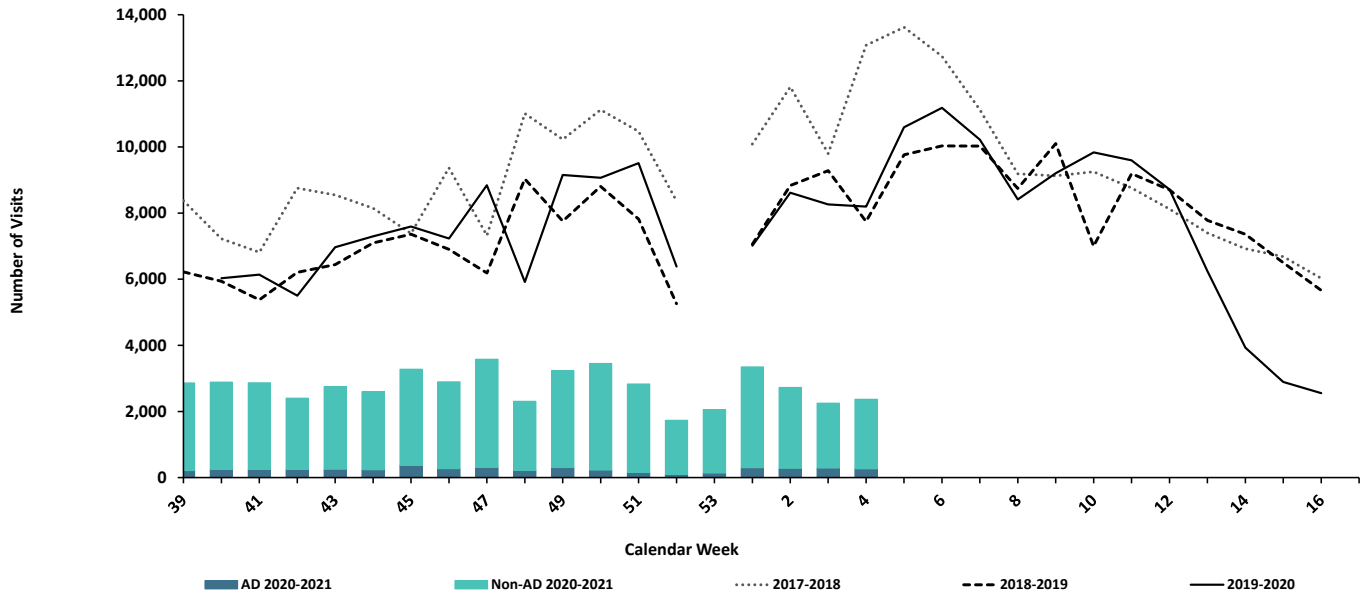
†These seasons did not have a week 53, so the week 53 value is an average of week 52 and week 1.

Source: Centers for Disease Control and Prevention (CDC)



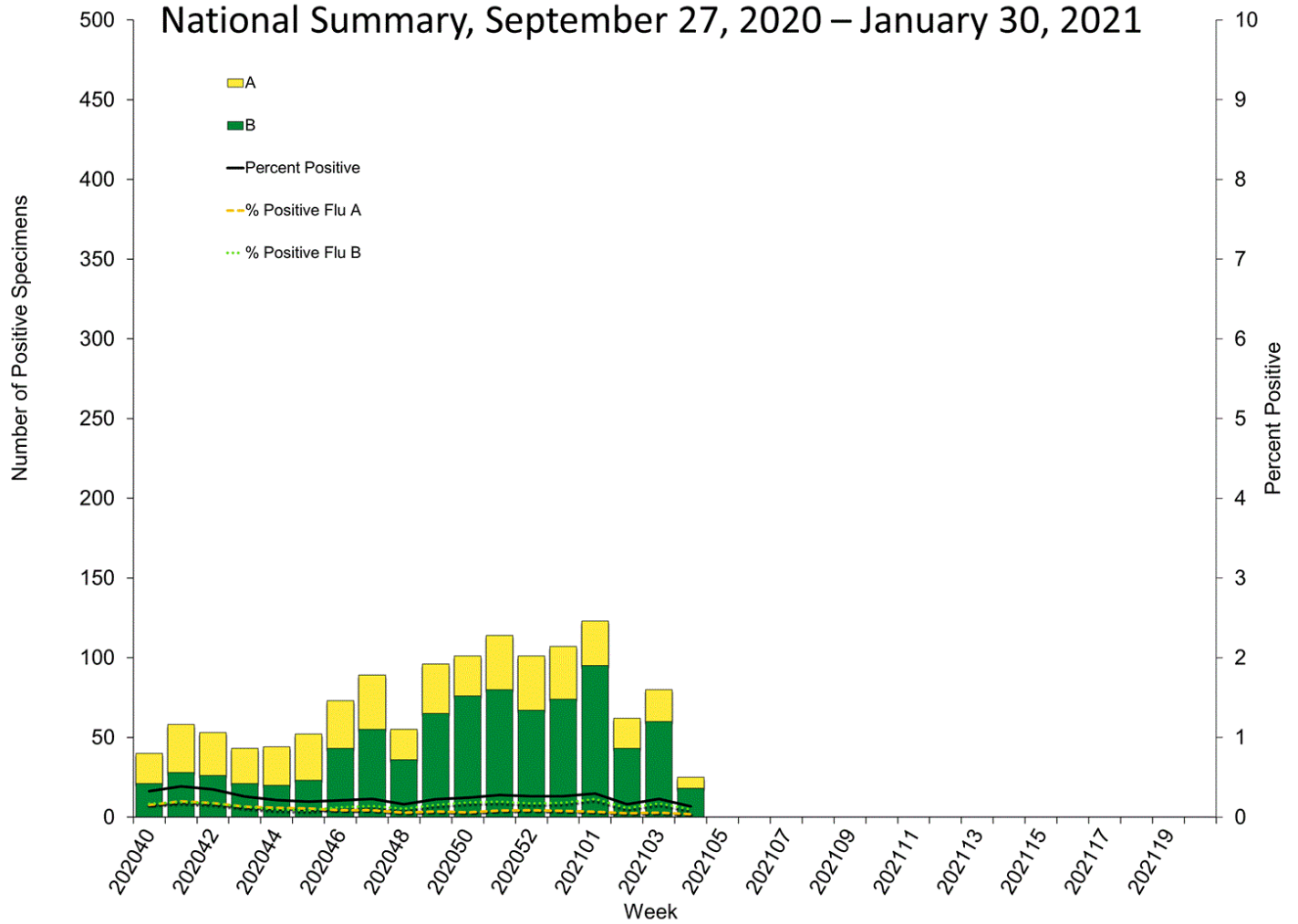
U.S. Army Public Health Center  
**Army Influenza Activity Report**  
 Week ending 30 January 2021 (Week 4)

**ESSENCE Weekly Outpatient Clinic Visits for Influenza-like Illness**  
*Army MTFs, All Services, 2017-2021*



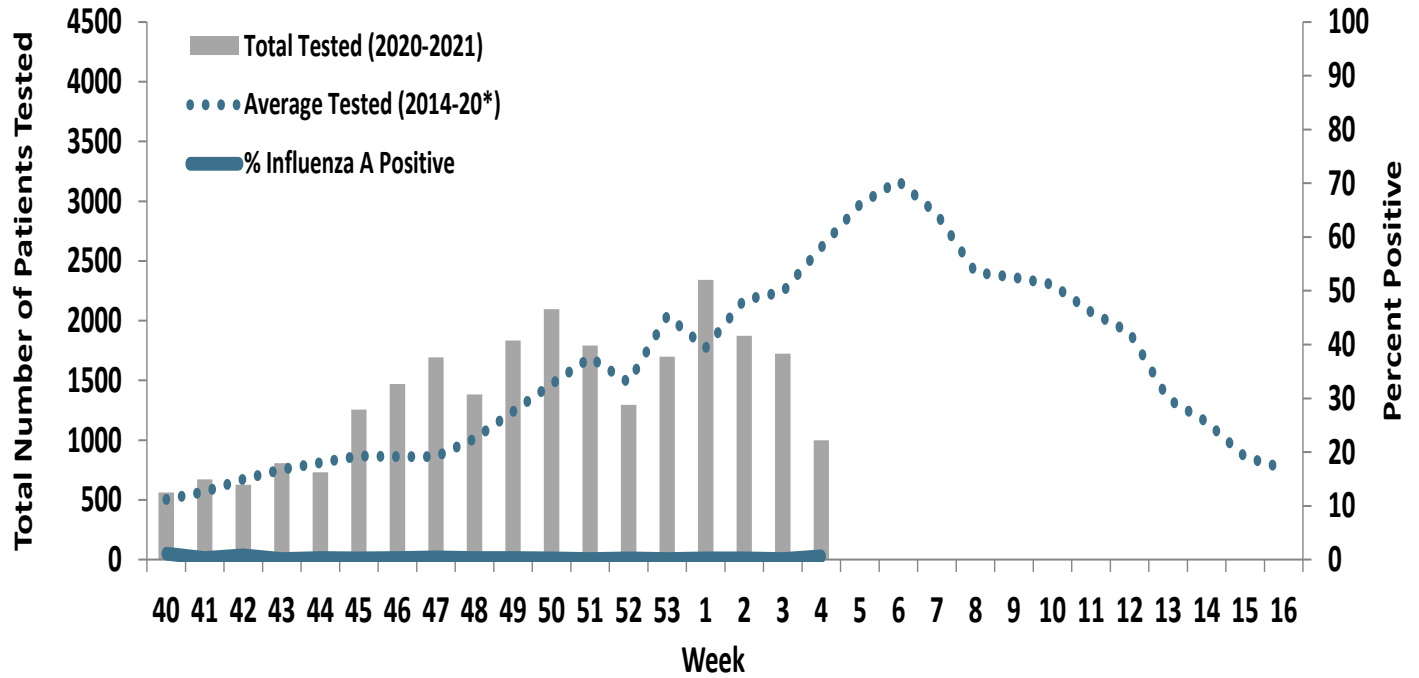


**Influenza Positive Tests Reported to CDC by U.S. Clinical Laboratories, National Summary, September 27, 2020 – January 30, 2021**



Source: Centers for Disease Control and Prevention (CDC)

**Proportion of Positive Influenza A Specimens for U.S. Army 2020-2021**



\*2014/2015 influenza season - 2019/2020 influenza season